

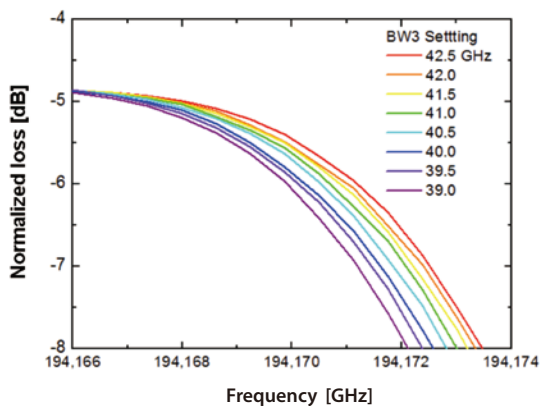
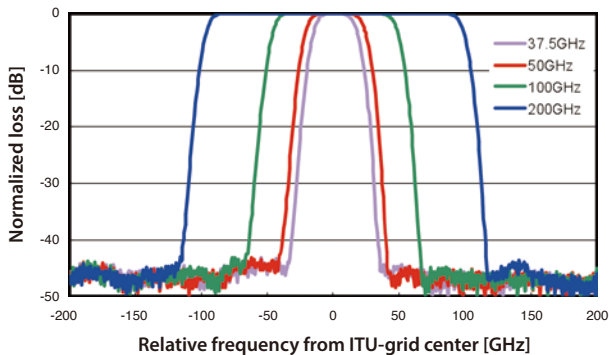
NEW

Programmable Optical Filters WSS-1000

The WSS-1000 is a LCOS based Programmable Optical Filter. Santec's proprietary LCOS (Liquid Crystal on Silicon) technology inside the WSS-1000 offers the ultimate in flexibility, enabling the user to program a limitless range of optical filtering, attenuation and switching schemes. The WSS-1000 is an enabling technology for investigating next generation optical networks by utilizing the filter as an optical equalizer of high-speed signals, as an adaptive channel filter for advanced optical transmission systems (DWDM, OFDM), as a WSS emulator or as a flexible test and measurement system.



Measurement Data



Bandwidth and frequency tuning

Features

- ▶ Programmable arbitrary spectral shaping
- ▶ C or L-band operation
- ▶ Fine frequency and bandwidth control
Setting resolution 1GHz (typ.)
- ▶ Excellent optical filtering with steeper edge
400dB/nm (typ.)
- ▶ Switching function optionally
1, 2 or 4 outputs

Applications

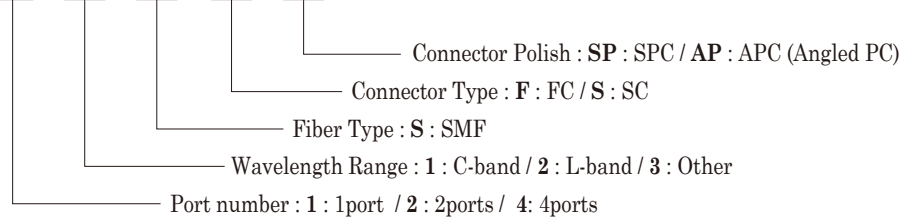
- ▶ Optical equalizer for high-speed optical signals
- ▶ 100Gb/s, 400Gb/s transmission test
- ▶ Adjustable and adaptive DWDM, OFDM channel filtering
- ▶ Flexible test and measurement
- ▶ Next generation bundle wavelength OXC
- ▶ Pulse shaping

■ Specifications

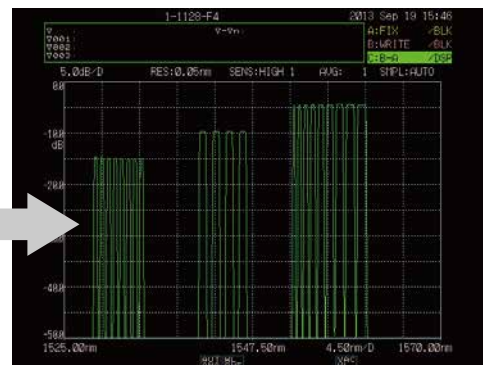
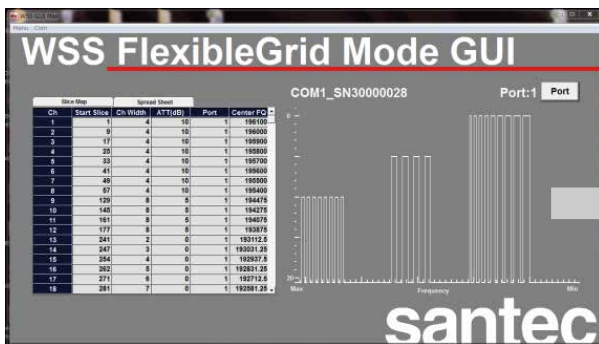
Category	Parameter	Unit	Min.	typ.	Max.	Notes
Filter	Operating frequency range	THz	191.325		196.125	
	Operating wavelength range	nm	1528.579		1566.928	
	Frequency setting accuracy	GHz	-2.5		2.5	
	Frequency setting resolution	GHz		1		
	Operating bandwidth range	GHz	12.5		4800	
		nm	0.1		38	
	Bandwidth setting accuracy	GHz	-5		5	
	Bandwidth setting resolution	GHz		1		
	Attenuation control range	dB	0		20	
	Attenuation setting resolution	dB		0.1		
	Attenuation setting accuracy 1	dB	-0.2		0.2	Attenuation 1.0-2.0dB
Attenuation setting accuracy 2	dB	-0.5		0.5	Attenuation 2.1-5.0dB	
Attenuation setting accuracy 3	dB	-2.8		2.8	Attenuation 5.1-15.0dB	
Filter edge slope	dB/nm		400			
Switching	Number of input ports			1		
	Number of output ports			1 or 2 or 4		
Loss	Insertion loss	dB		5.5	6.5	Bandwidth@-3dB > 25GHz
	Insertion loss uniformity	dB		1.1	2.5	
	Polarization dependent loss (PDL)	dB			0.8	Attenuation 0-10.0dB
	Return loss	dB	30	35		
	Extinction ratio	dB	35	40		
Optical power	Maximum total input power	dBm			27	
	Maximum per-channel optical power	dBm			13	
Environmental	Operating temperature	degC	15		35	
	Power supply	V	Input AC 100-240V 50-60Hz			
Electrical	Power consumption	VA			12	
	Communication interface		USB 2.0			
Mechanical	Dimensions (W) x (D) x (H)	mm	210 x 350 x 88			
	Weight	kg	4			

■ Ordering Code

WSS-1000 - A - B - C - D - E



■ GUI of Control Software



www.santec.com E-Mail : sales@santec.com

2007 © SANTEC CORPORATION Santec reserves the right to make changes in equipment design, components or specifications without notice.



SANTEC CORPORATION

5823 Ohkusa-Nenjoyozaka, Komaki, Aichi 485-0802, Japan Tel. +81-568-79-1959 Fax +81-568-79-1718

SANTEC U.S.A. CORPORATION

433 Hackensack Ave., Hackensack, NJ 07601, U.S.A. Toll Free +1-800-726-8321(santec-1) Tel. +1-201-488-5505 Fax +1-201-488-7702

SANTEC EUROPE LIMITED

Magdalen Centre, Robert Robinson Ave., The Oxford Science Park, Oxford OX4 4GA, U.K. Tel. +44-1865-784960 Fax +44-1865-784961

SANTEC (SHANGHAI) Co., Ltd.

No.800 Zhangyang Road Changhang Tower, Pudong District, Shanghai 200122 China Tel: +86-21-58361261, +86-21-58361262 Fax: +86-21-58361263